



AUCTION

LEADING THE INDUSTRY SINCE 1945

Realtors • Auctioneers • Advisors

FRIDAY – OCTOBER 28, 2022 – 12:00 PM

9.28 Acres Commercial Land

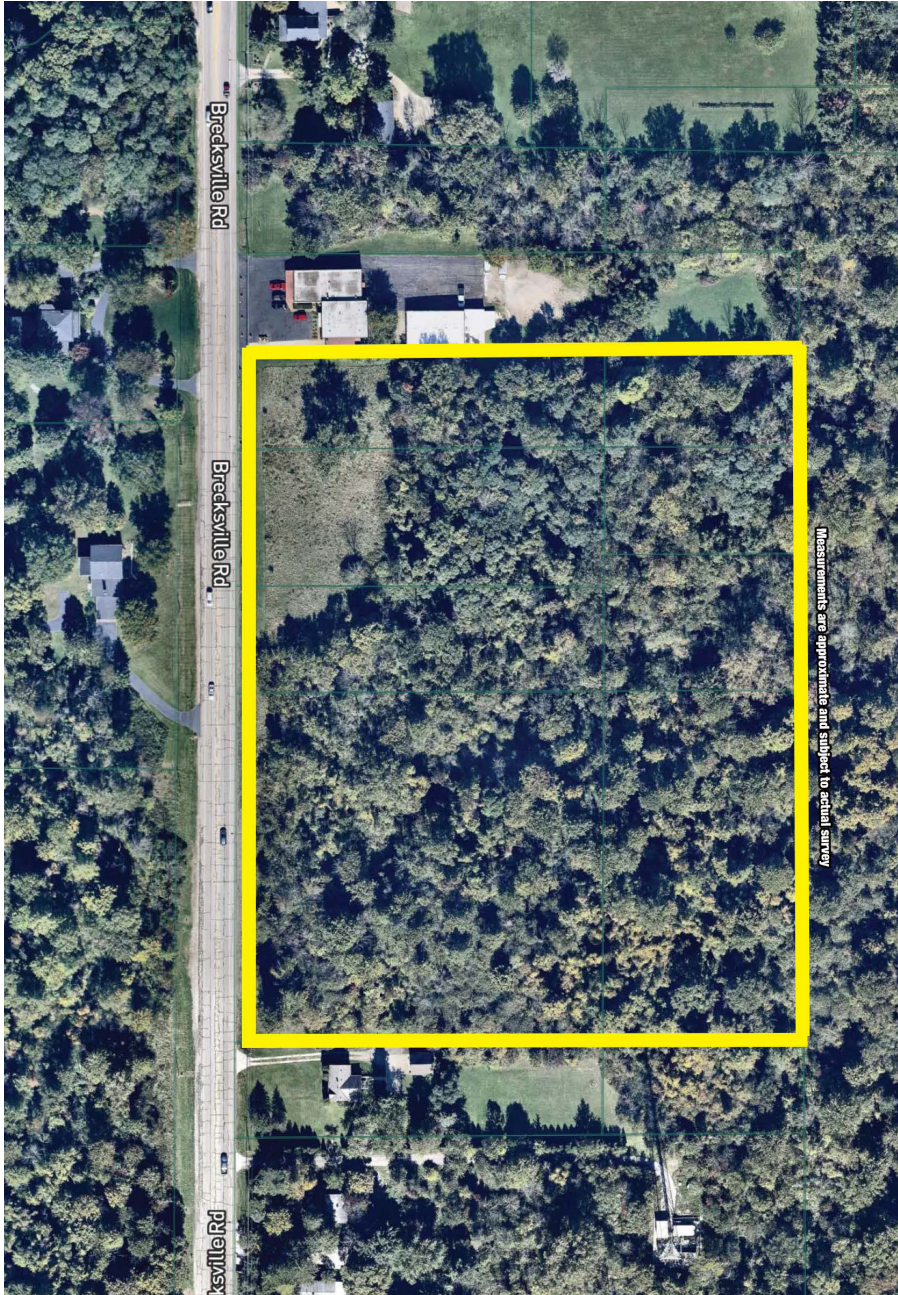
COURT ORDERED AUCTION

710' Road Frontage – Mostly Wooded
Summit County – Richfield Village – Revere LSD
Zoned CH II Historical Commercial – All Utilities Available

Court ordered auction. Sells on Location:

(3600-3700 BLOCK) BRECKSVILLE RD., RICHFIELD, OH 44286

Directions: Take the Wheatley Rd. exit west of I-77 to Brecksville Rd. then north. Watch for KIKO signs.



Measurements are approximate and subject to actual survey



Real Estate: 8 Parcels total, all selling as one. Parcel #5000195, #5000196, #5000197, #5000200, #5002330, #5002331, #5002332 & #5002687. Great investment or development opportunity with water, sewer, and gas available. Real estate taxes total \$3,419.76 per half year. Walk land with permission only; call Jeff Kiko, 330-206-1079. Auction will be held on-site with online bidding available. Subject to court approval and minimum purchase price of \$220,000.

Terms On Real Estate: 10% down auction day, balance due at closing. A 10% buyer's premium will be added to the highest bid to establish the purchase price. Any desired inspections must be made prior to bidding. All information contained herein was derived from sources believed to be correct. Information is believed to be accurate but not guaranteed. Property to be sold as an Entirety and not to be offered in separate parcels.



Auctioneer/Realtor®
JEFF R. KIKO
330-206-1079
jeffkiko@kikocompany.com

Auction By Order Of: Summit County Court Of Common Pleas Case #CV-2019-09-3410

Information is believed to be accurate but not guaranteed. KIKO Auctioneers

800-533-5456 | kikoauctions.com

